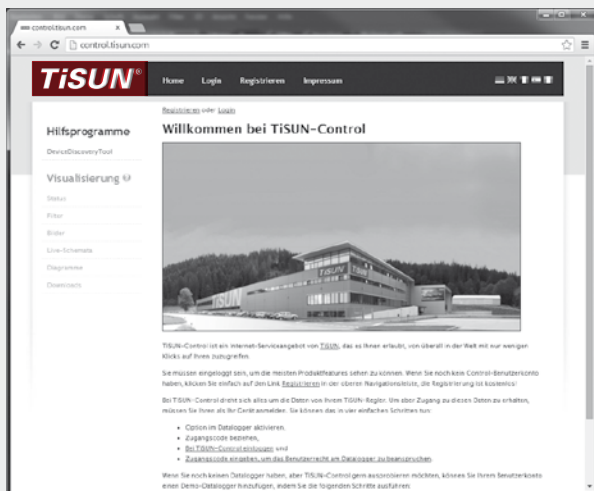


TISUN-CONTROL SERVICE PORTAL

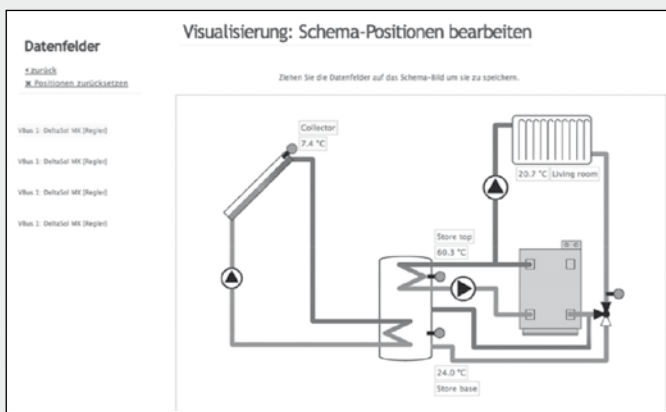


TiSUN® -Control

Product description

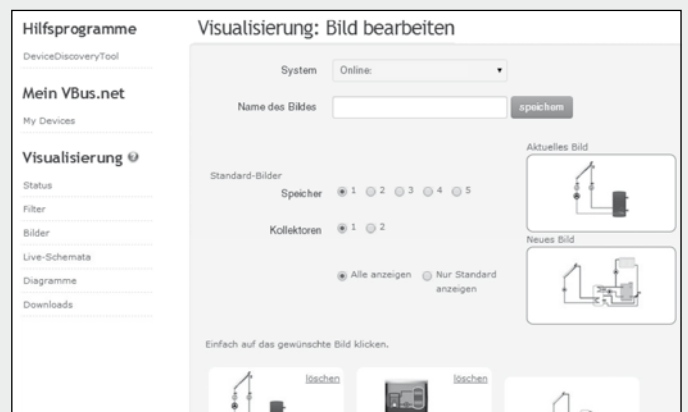
TiSUN-Control is a service portal that allows a solar system to be reached via the internet without any configuration being required. Therefore there is no need to configure the DSL router. To use the TiSUN-Control Service, the system must be fitted with an AD webmodule or an EX webmodule. The webmodule can be logged into the system after registering at control.tisun.com. TiSUN-Control allows users to access the data of their solar systems from anywhere in the world using a normal web browser. No additional software and no special app is required to use it. All that is required is a configured access to the TiSUN-Control Service, an internet browser and an internet connection. For instance, many common mobile end devices are supported. The RPT software is also available for free download at the portal to configure the controller via internet.

- Your solar and heating system in the internet – without complicated router configuration
- Very easy using AD or EX webmodule
- Visualisation also provided for all common module end devices
- System access via web browser - no software installation required
- Display of data curves (trends) as live-data display or as a diagram
- Data can be published with a click when required
- Individual filters for made-to-measure display of data
- RPT configuration software available as a free download



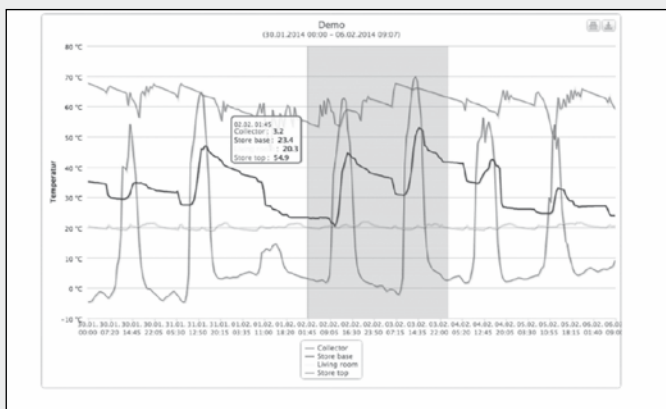
Live schematic

Display your live data before the background of a schematic drawing of your solar system. Easily position the data items yourself by pulling the elements onto the image.



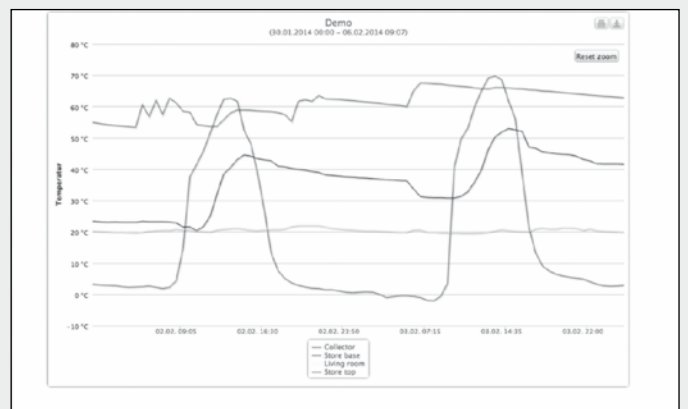
Images

Store schematic diagrams of your solar system for later use in your live-data display. Select a schematic diagram from the standard selection or upload your own graphic.



Diagrams

Display stored data as a diagram over a set time period.



Zoom

Zoom any sections of a diagram to show data curves more exactly.